

azad
views

An Exclusive Apartments
Community, Where Reality
Surpasses Expectations



ABOUT AZAD VIEWS

After redefining architecture, and from the works of Azad, tāmeer introduces a new concept of what the future holds for a lively home and beautiful community. Azad Views is where your new home awaits.



“

Its distinct design is built from the inspiration of having a scenic surrounding all the time. Azad Views is all about providing you and your family with a home overlooking greenery, wide spaces and of course, safety for all. Wherever you look, spectacular greenery is all that the eyes can see, remarkable sunsets from the comfort of your home, and facilities that meet your needs.

tāmeer



ABOUT tāmeer

For over six decades, tāmeer has been the mastermind behind some of Egypt's most iconic and standing ovation designs such as Oberio, Helnan, and Meridien.

With over 27 thousand units delivered, tāmeer continues to raise the bar for modern living to this very moment. Today, our passion for building communities shines through at AZAD and DIAR II, two vibrant residential neighborhoods built in the 5th Settlement and 6th of October city.

THE IDEAL LOCATION

Higher education is steps away.

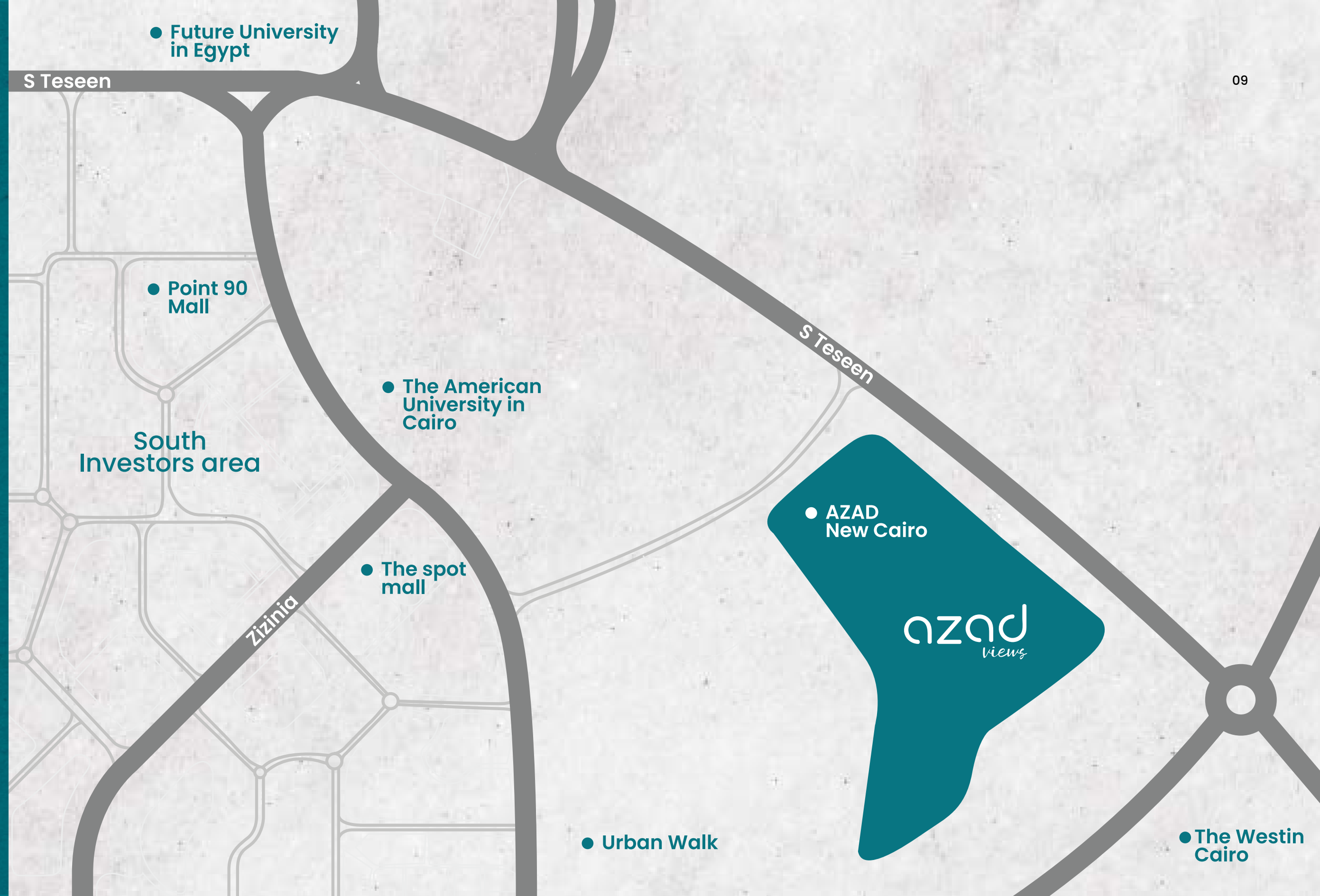
Azad Views is strategically located near the best liberal arts education, the American University in Cairo, an affluent area with a vibrant community of students, professors, and promising events, right around the corner.

Closer to the world.

Only 15 minutes away from the airport, making it of great convenience for your next travel destination

Near the future.

The New Capital is where the future lies and where businesses are expected to thrive, Azad Views is just a 40 minute drive away.





MASTER PLAN

01 URBANWALK
Mixed-used
Project
55 Acers

**02 COMMUNITY
CENTER**

03 AZAD WALK

04 AZAD
Residential
Apartments
20 Acers

**05 AZAD
VIEWS**
Residential
Apartments
20 Acers

06 AZ HOMES

**07 THE WATER
MARQ**
Residential
Standalone Villas
20 Acers

MASTER PLAN





A NEW ADDRESS WITH ESTABLISHED APPEAL

AZAD VIEWS brings together comfort and community with grace. It is connected to the vibrant AZAD neighborhood, meeting through the community center where you can indulge in physical spaces and community activities.

The lush greenery area serves as a place for gatherings and a platform to host activities, have sweet picnics, devour the good food of barbecues, release any stress with yoga sessions, and fill your canvas of awaited dreams with this scenery.



AZAD VIEWS

PHASE 3 MASTER PLAN

The master plan of this phase is designed to fill your new home with the lifestyle you desire. Surrounded by open spaces, including a diverse range of outdoor sports, a swimming pool, parks, and shaded settings, you'll have opportunities to stay fit, healthy, and relaxed.

landscape facilities that are included in this phase as follow: Seating area, Kids pool, greenery landscape, and of course they have the accessibility of all the facilities of Phase 1 and 2: Multi purpose court, Pet park, Jogging track and, Swimming pool.

As a resident of this phase, you'll also have exclusive access to the neighboring Business Lounge; a luxurious and profound place to elevate your connections, take on important business meetings, work, and meet like minded individuals.

A modern, multi-story building with balconies and large windows is the central focus. The building has a light-colored facade and dark accents. In the foreground, there are several palm trees of varying heights and a wooden pergola structure. The sky is a clear, bright blue. The overall scene is bright and sunny, suggesting a warm climate. The text 'EXPLORE OUR FACILITIES' is overlaid on the left side of the image.

EXPLORE OUR
FACILITIES

A CYCLING LANE*Bike Friendly - The fast lane*

Nothing beats the freeing feeling of taking your bike along a cycling path with the high quality infrastructure that is designed to keep you safe, and at ease as you roam around the neighborhood.

FOR THE LITTLE ONES*kids area*

Within close proximity from home, lies a freeing safe space created to nurture your little ones, let them roam freely in the kids area, and have some fun in the sun!





OUTDOORS SPORTS

A healthy living has become more accessible with our outdoor sports facilities. A place dedicated to community bonding, dribbling, serving, and scoring your way into wellness in this outdoor setting.

THE PET PARK

We keep in mind all family members, including the furry ones. This open area allows your dog to run around unleashed, get some exercise, fresh air, and play with other furry friends.

LEISURE & EXERCISING SWIMMING POOL

With crystal-clear waters and a spacious deck, we provide you with the perfect setting for a refreshing swim, relaxing soak, or a vigorous workout. Whether you're looking to improve your fitness, or cool off, allow yourself to dive into this swimming pool.

JOGGING TRACK

Start your days off on the right foot with a jogging track that will be your new go-to for energizing morning runs or peaceful evening walks. Surrounded by a breathtaking view, this is the path that will elevate your lifestyle.



—
**GROUND
FLOOR**

LAYOUT





—
TYPICAL
FLOOR

LAYOUT





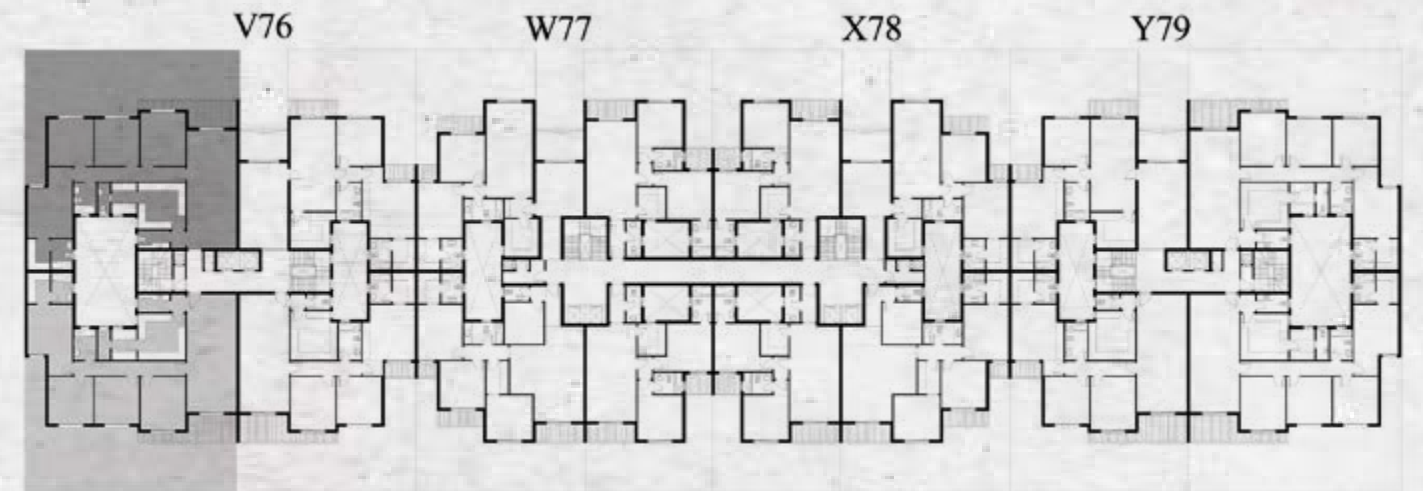
—
**APARTMENT
MODELS**

MODEL- V76



V76-GROUND (0-1 / 0-2)

TOTAL GROSS AREA - 191.00

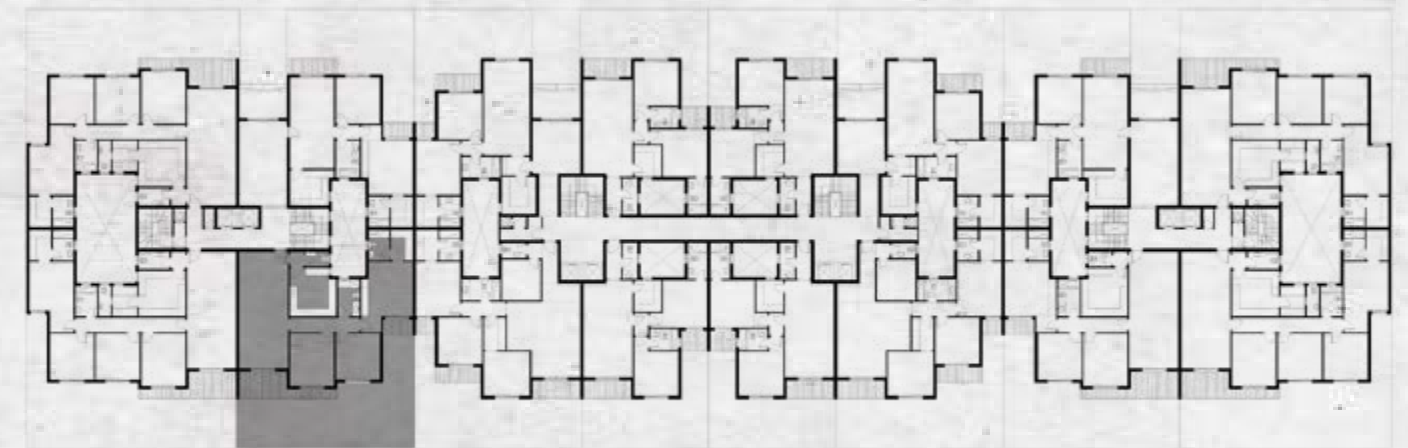


LOCATION & DIMENSIONS

Reception & Dining	9.45 X 4.00	Maid Toilet	2.47 X 1.00	Bathroom	2.47 X 1.80
G. Toilet	2.54 X 1.41	Bedroom 1	4.26 X 3.60	M.Bedroom	5.68 X 3.60
Kitchen	3.82 X 3.71	Bedroom 2	3.75 X 3.60	M.Dressing	2.46 X 1.78
Maid Room	3.13 X 2.47	Bedroom 3	3.75 X 3.60	M.Bathroom	2.46 X 1.70

V76-GROUND (0-3)

TOTAL GROSS AREA - 160.00

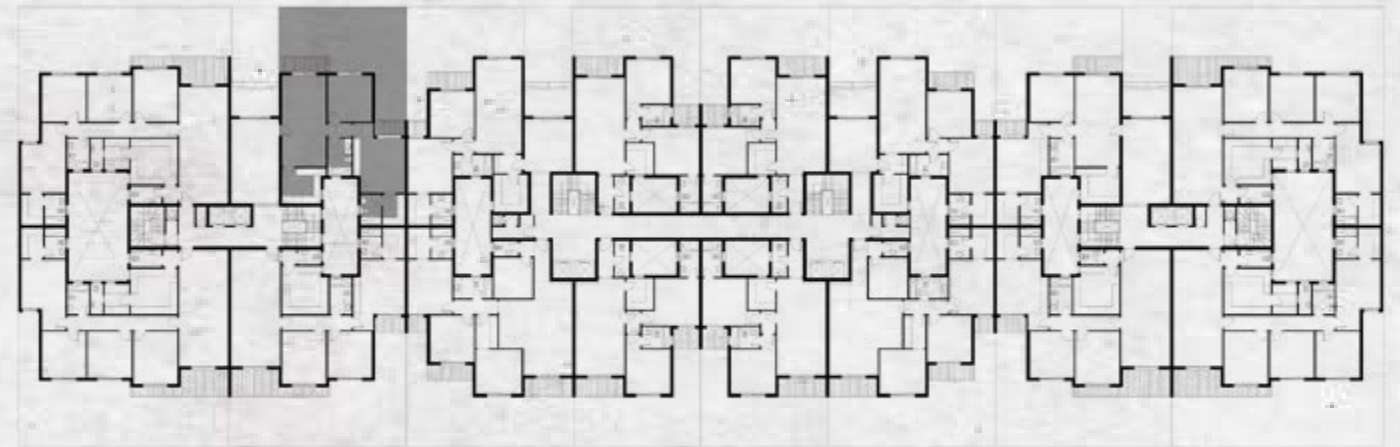


LOCATION & DIMENSIONS

Reception & Dining	9.45 X 4.00	Bedroom 1	4.26 X 3.60	M.Bedroom	4.41 X 3.72
G. Toilet	1.88 X 1.20	Bedroom 2	3.75 X 3.60	M.Dressing	2.46 X 1.78
Kitchen	3.92 X 3.76	Bathroom	2.99 X 1.80	M.Bathroom	2.46 X 1.70

V76-GROUND (0-4)

TOTAL GROSS AREA - 112.00

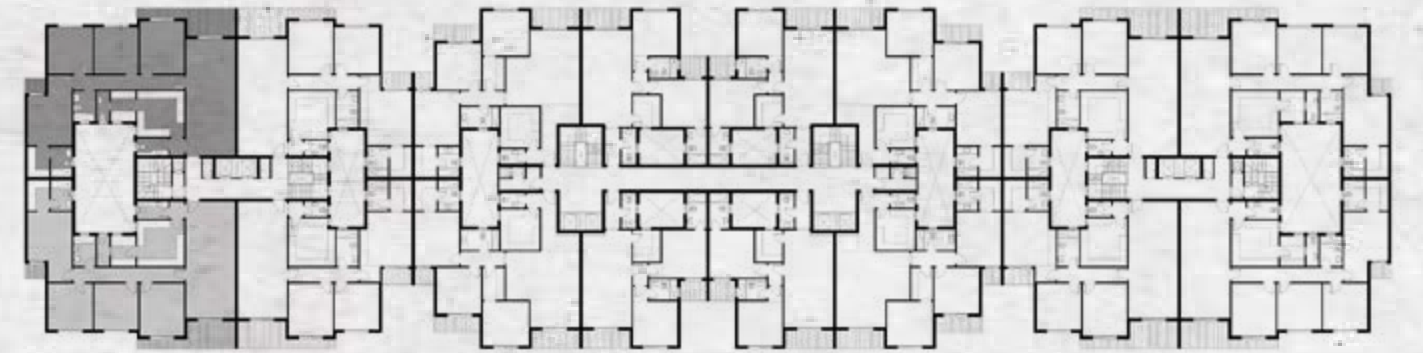


LOCATION & DIMENSIONS

Reception & Dining	7.42 X 3.60	Bathroom	2.99 X 1.96	M.Dressing	2.46 X 1.78
Kitchen	3.16 X 2.85	M.Bedroom	4.41 X 3.72	M.Bathroom	2.46 X 1.70
Bedroom 1	3.75 X 3.60				

V76-TYPICAL (1-1 / 1-2)

TOTAL GROSS AREA - 209.00



LOCATION & DIMENSIONS

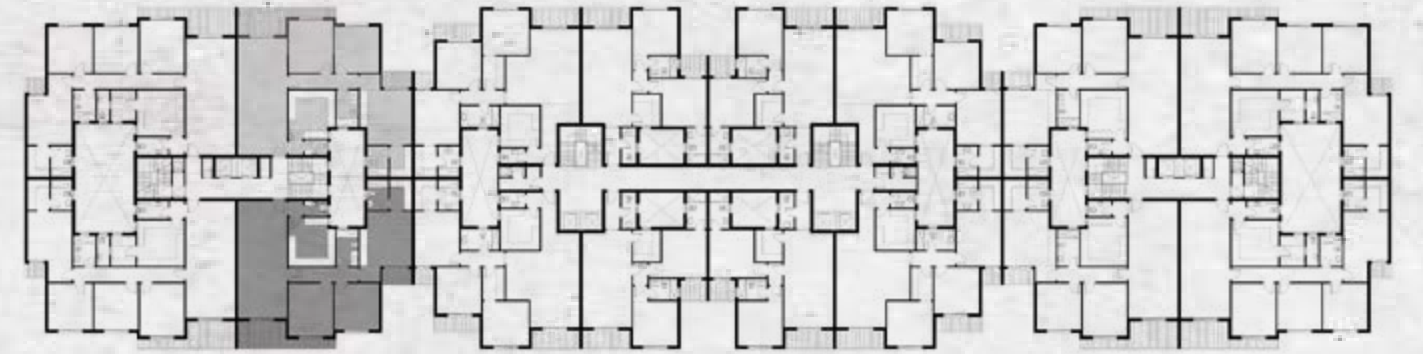
Reception & Dining	9.45 X 4.00
G. Toilet	2.54 X 1.41
Kitchen	3.82 X 3.71
Maid Room	3.13 X 2.47

Maid Toilet	2.47 X 1.00
Bedroom 1	4.26 X 3.60
Bedroom 2	3.75 X 3.60
Bedroom 3	3.75 X 3.60

Bathroom	2.47 X 1.80
M. Bedroom	5.68 X 3.60
M. Dressing	2.46 X 1.78
M. Bathroom	2.46 X 1.70

V76-TYPICAL (1-3 / 1-4)

TOTAL GROSS AREA - 179.00



LOCATION & DIMENSIONS

Reception & Dining 9.45 X 4.00
G. Toilet 1.88 X 1.20
Kitchen 3.76 X 3.71

Bedroom 1 4.26 X 3.60
Bedroom 2 3.75 X 3.60
Bathroom 2.99 X 1.80

M.Bedroom 4.41 X 3.72
M.Dressing 2.46 X 1.78
M.Bathroom 2.46 X 1.70

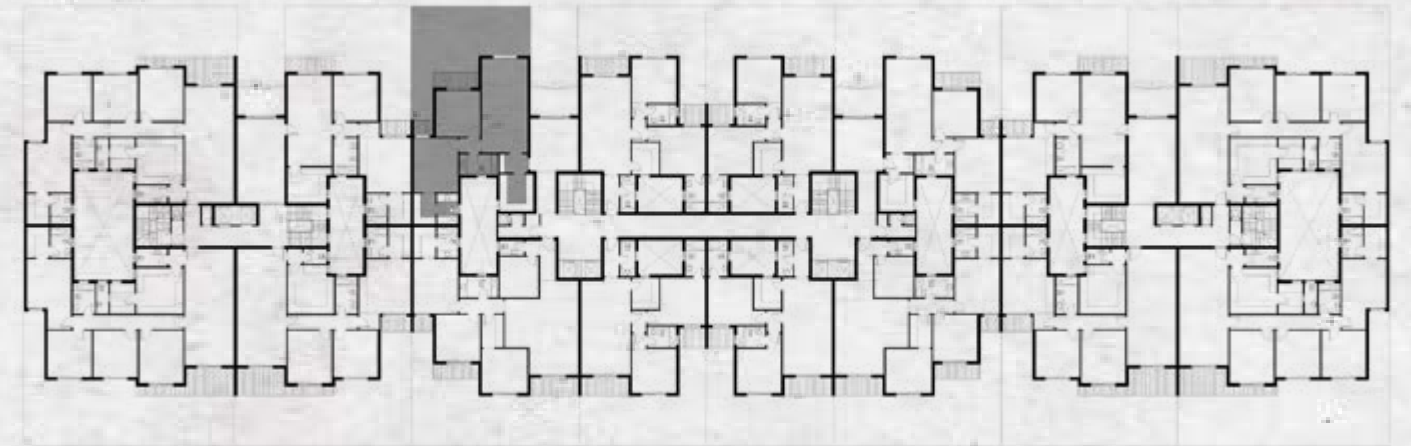
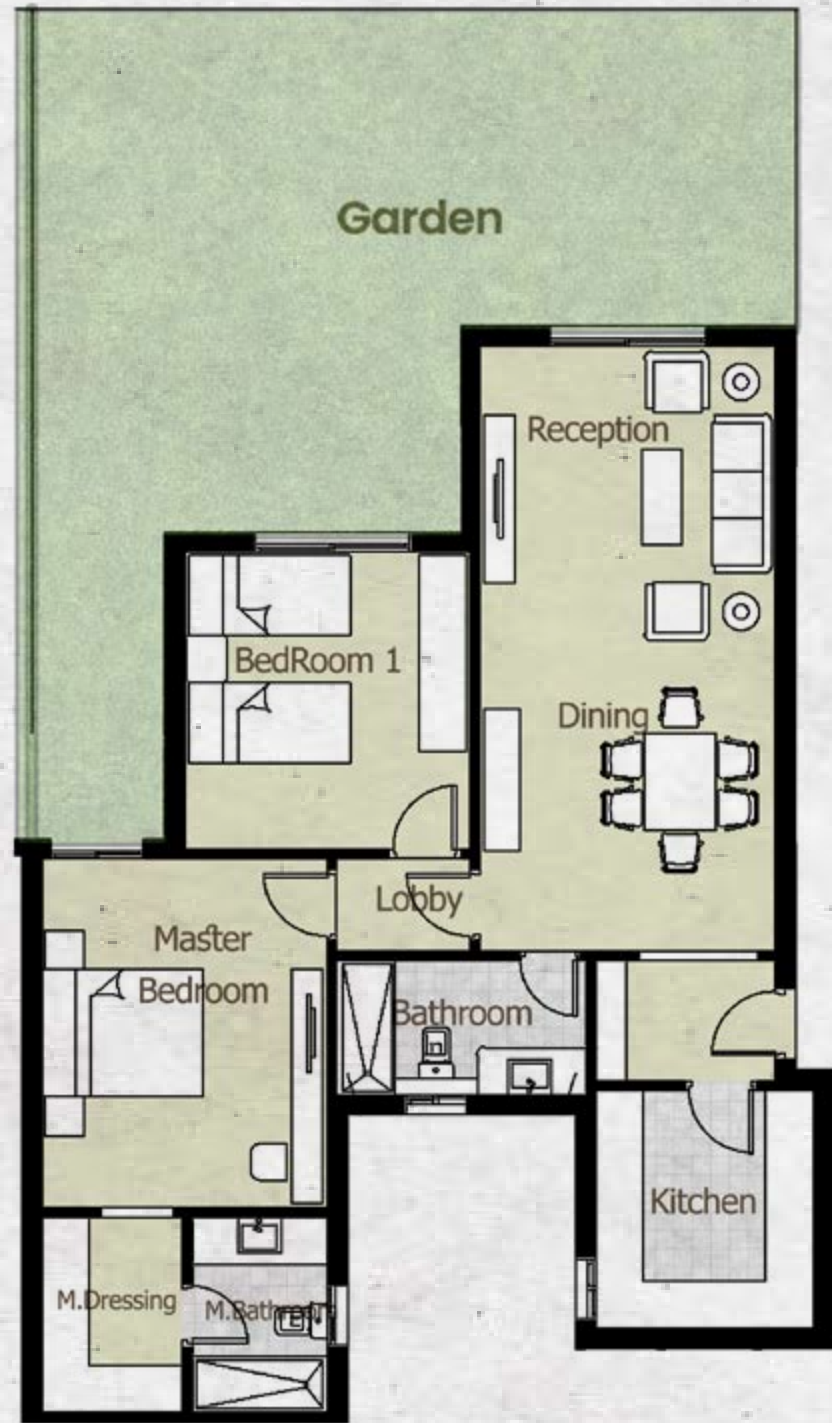
**APARTMENT
MODELS**

MODEL- W77



W77-GROUND (0-1)

TOTAL GROSS AREA - 112.00

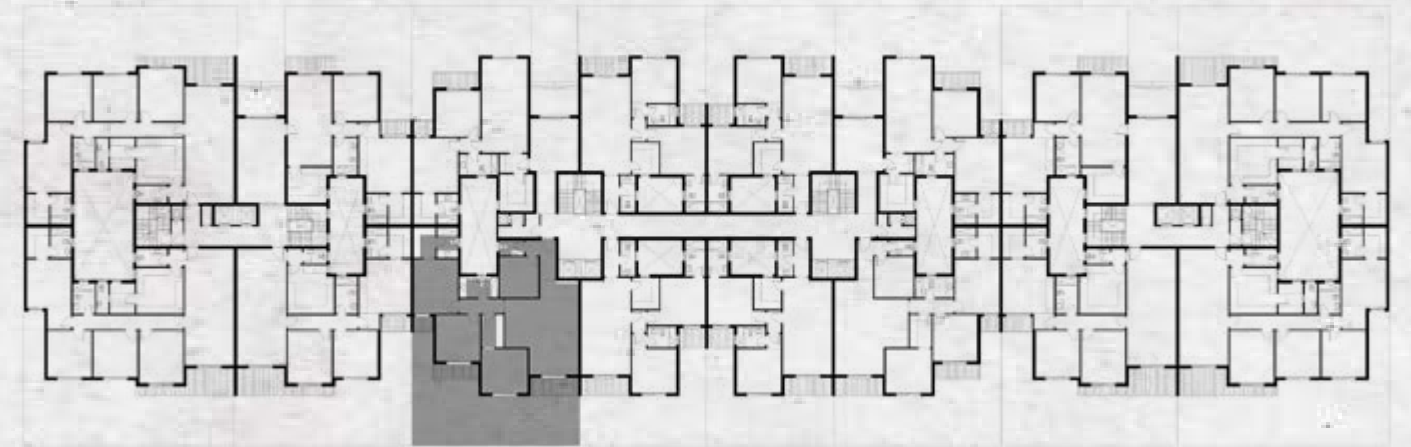
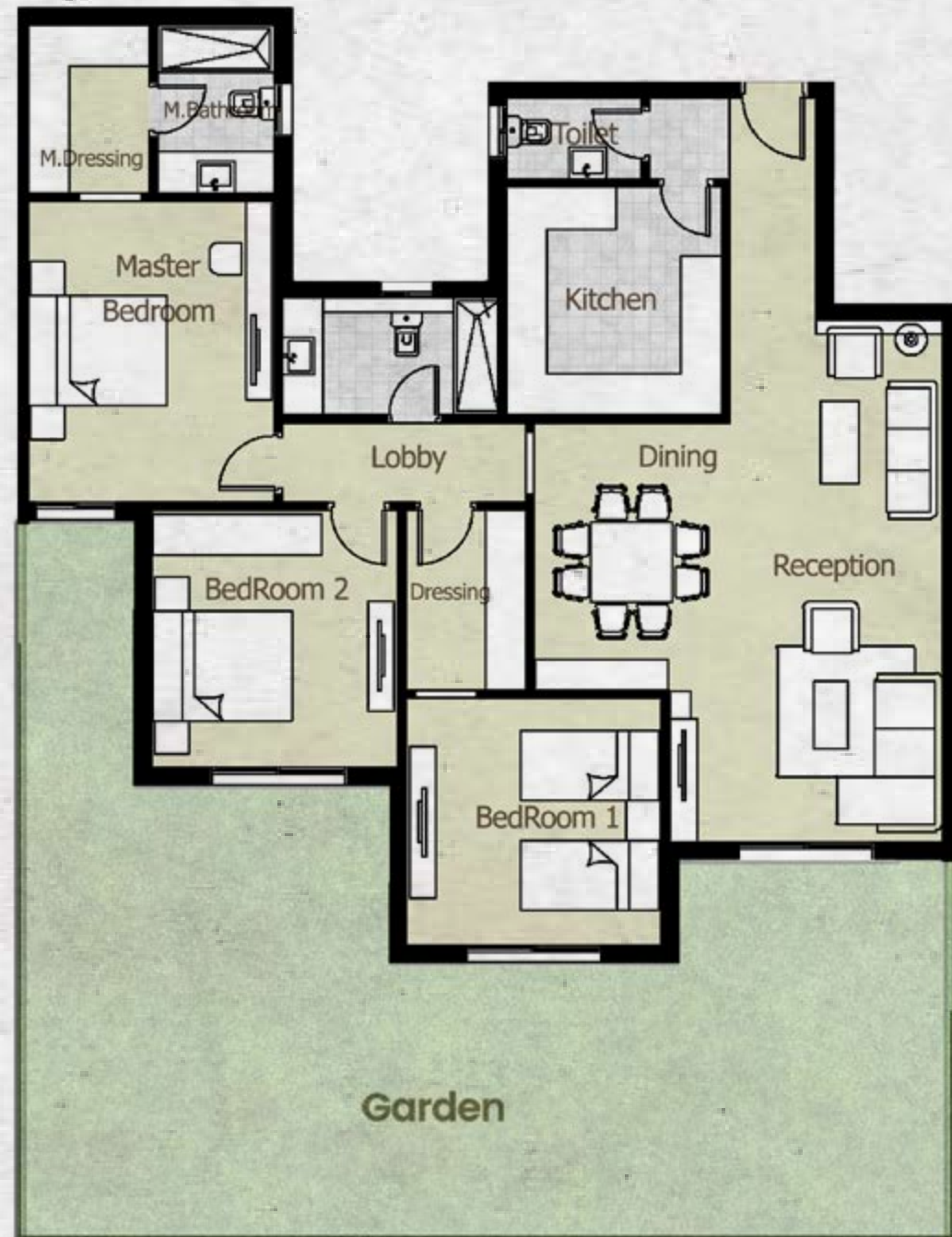


LOCATION & DIMENSIONS

Reception & Dining	7.63 X 3.73	Bathroom	3.15 X 1.70	M.Dressing	2.46 X 1.78
Kitchen	3.00 X 2.75	M.Bedroom	4.40 X 3.60	M.Bathroom	2.46 X 1.70
Bedroom 1	3.75 X 3.60				

W77-GROUND (0-2)

TOTAL GROSS AREA - 156.00

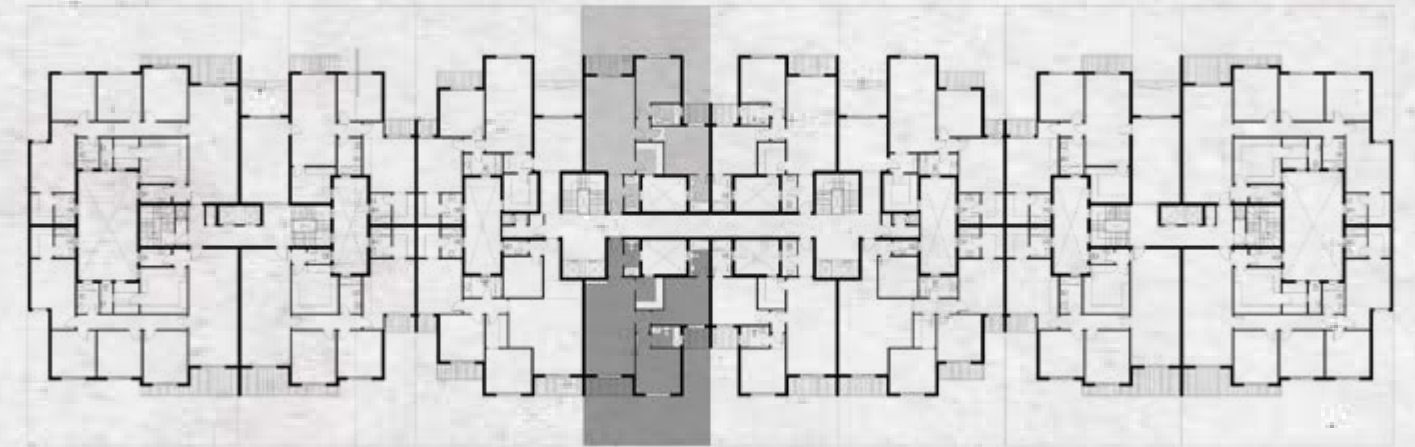
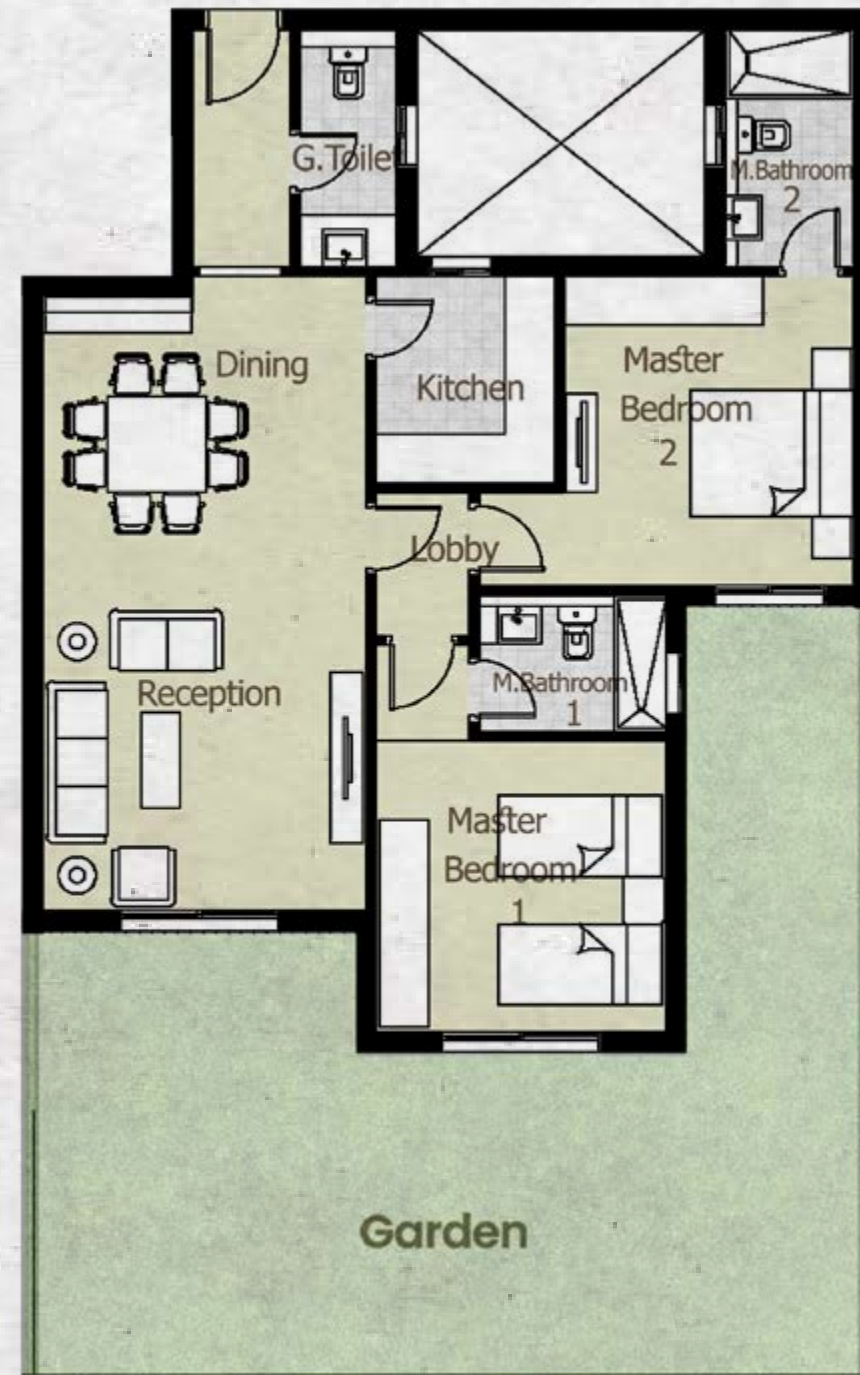


LOCATION & DIMENSIONS

Reception & Dining	7.43 X 5.97	Dressing	2.63 X 1.76	M.Bedroom	4.40 X 3.60
G. toilet	1.98 X 1.20	Bedroom 2	3.75 X 3.61	M.Dressing	2.46 X 1.78
Kitchen	3.32 X 3.16	Bathroom	3.15 X 1.70	M.Bathroom	2.46 X 1.70
Bedroom 1	3.73 X 3.60				

W77-GROUND (0-3 / 0-4)

TOTAL GROSS AREA - 111.00

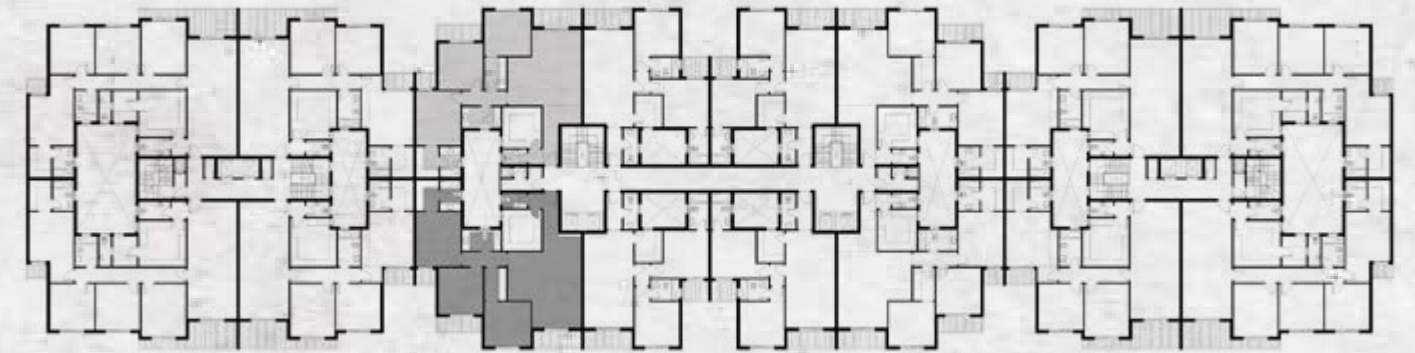


LOCATION & DIMENSIONS

Reception & Dining	7.43 X 4.00	M.Bedroom 1	3.60 X 3.60	M.Bedroom 2	3.83 X 3.60
G. toilet	2.93 X 1.20	M.Bathroom 1	2.32 X 1.72	M.Bathroom 2	2.93 X 1.60
Kitchen	2.55 X 2.22				

W77-TYPICAL (1-1 / 1-2)

TOTAL GROSS AREA - 171.00

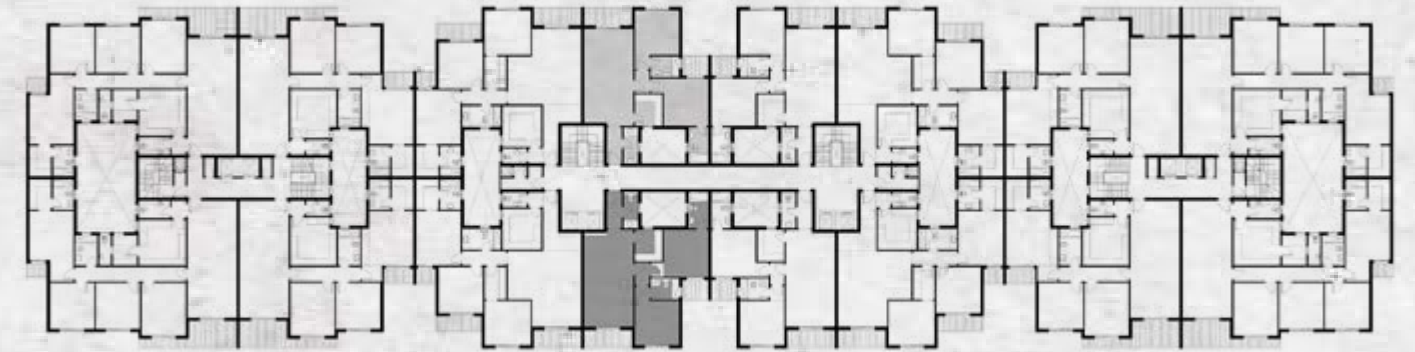
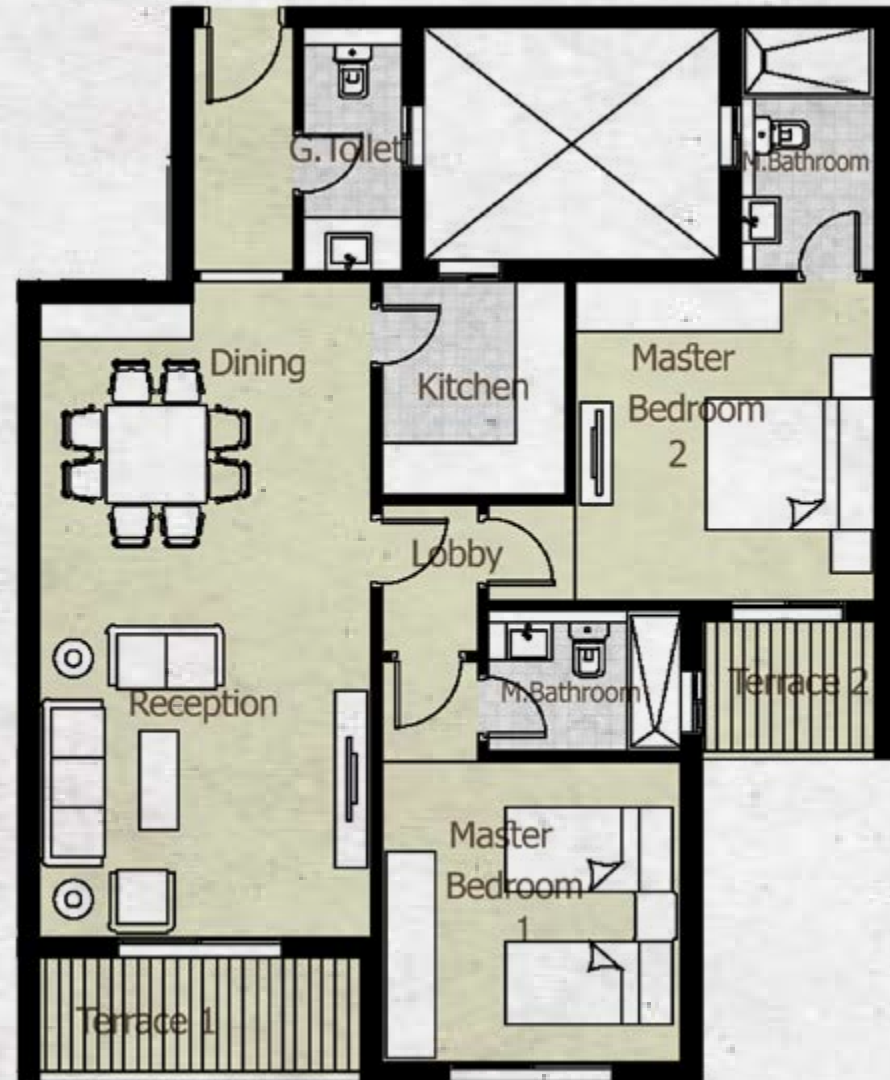


LOCATION & DIMENSIONS

Reception & Dining	7.43 X 5.97	Dressing	2.63 X 1.76	M.Bedroom	4.40 X 3.60
G. toilet	1.98 X 1.20	Bedroom 2	3.75 X 3.61	M.Dressing	2.46 X 1.78
Kitchen	3.32 X 3.16	Bathroom	3.15 X 1.70	M.Bathroom	2.46 X 1.70
Bedroom 1	3.73 X 3.60				

W77-TYPICAL (1-3 / 1-4)

TOTAL GROSS AREA - 122.00



LOCATION & DIMENSIONS

Reception & Dining 7.43 X 4.00
 G. toilet 2.93 X 1.20
 Kitchen 2.55 X 2.22

M.Bedroom 1 3.60 X 3.60
 M.Bathroom 1 2.32 X 1.72

M.Bedroom 2 3.83 X 3.60
 M.Bathroom 2 2.93 X 1.60

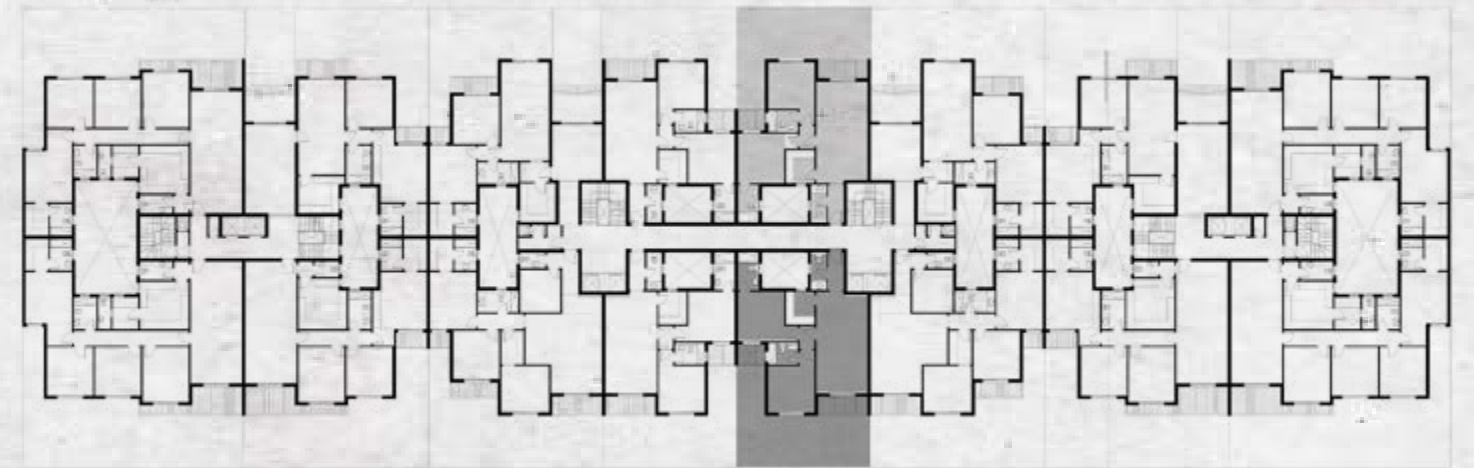
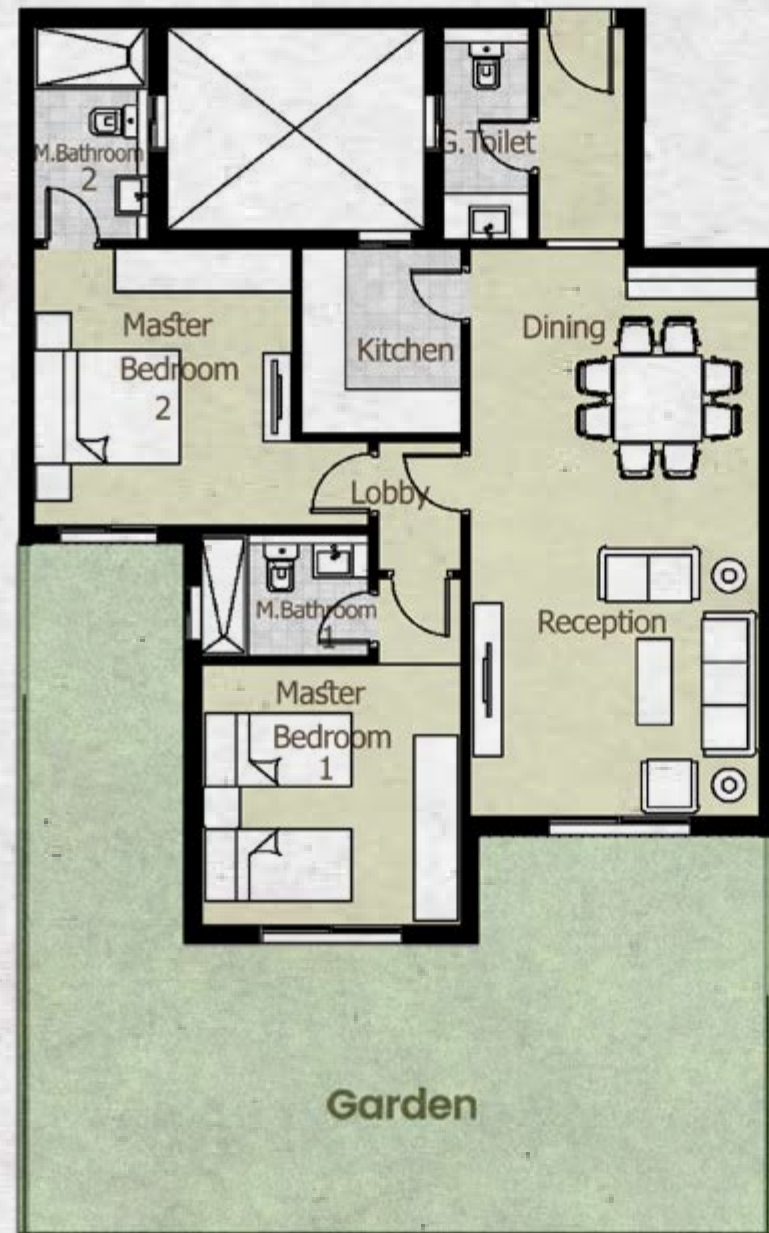
—
**APARTMENT
MODELS**

MODEL- X78



X78-GROUND (0-1 / 0-2)

TOTAL GROSS AREA - 111.00

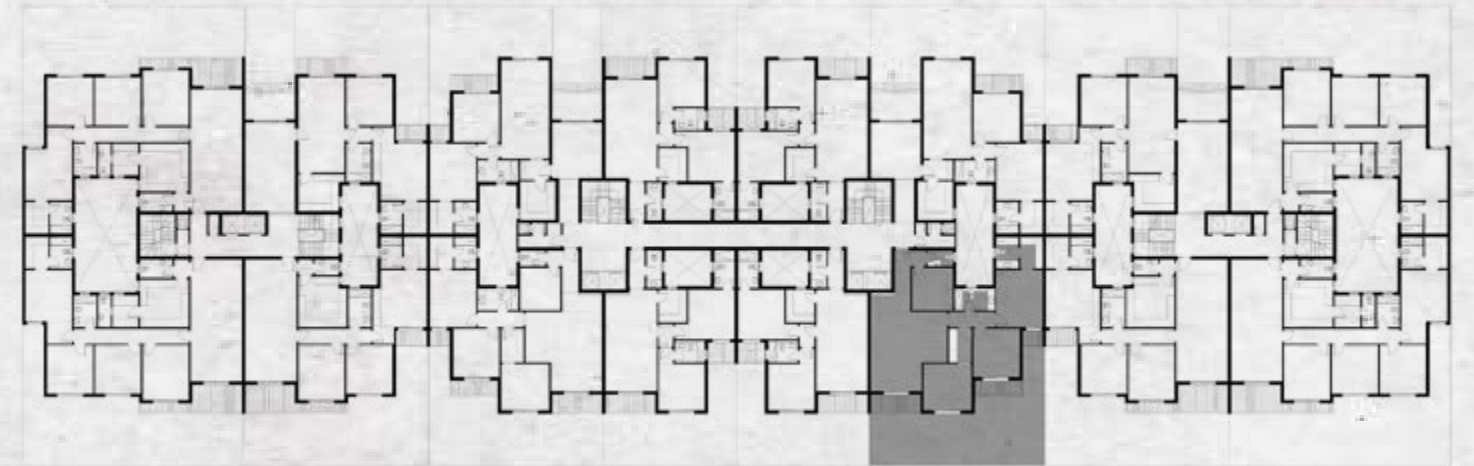
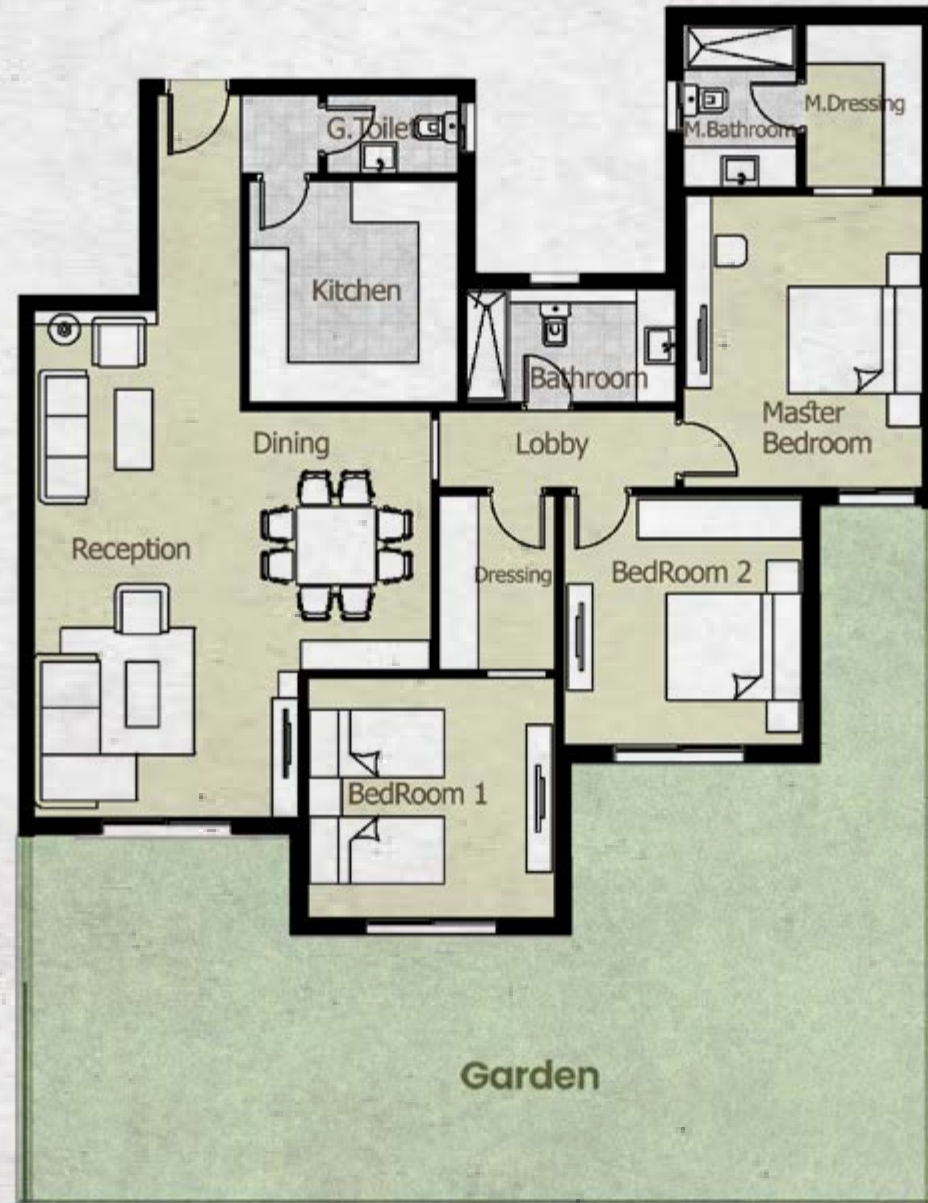


LOCATION & DIMENSIONS

Reception & Dining	7.63 X 4.00	M.Bedroom 1	3.60 X 3.60	M.Bedroom 2	3.83 X 3.60
G. toilet	2.93 X 1.20	M.Bathroom 1	2.32 X 1.72	M.Bathroom 2	2.93 X 1.60
Kitchen	2.55 X 2.22				

X78-GROUND (0-3)

TOTAL GROSS AREA - 156.00

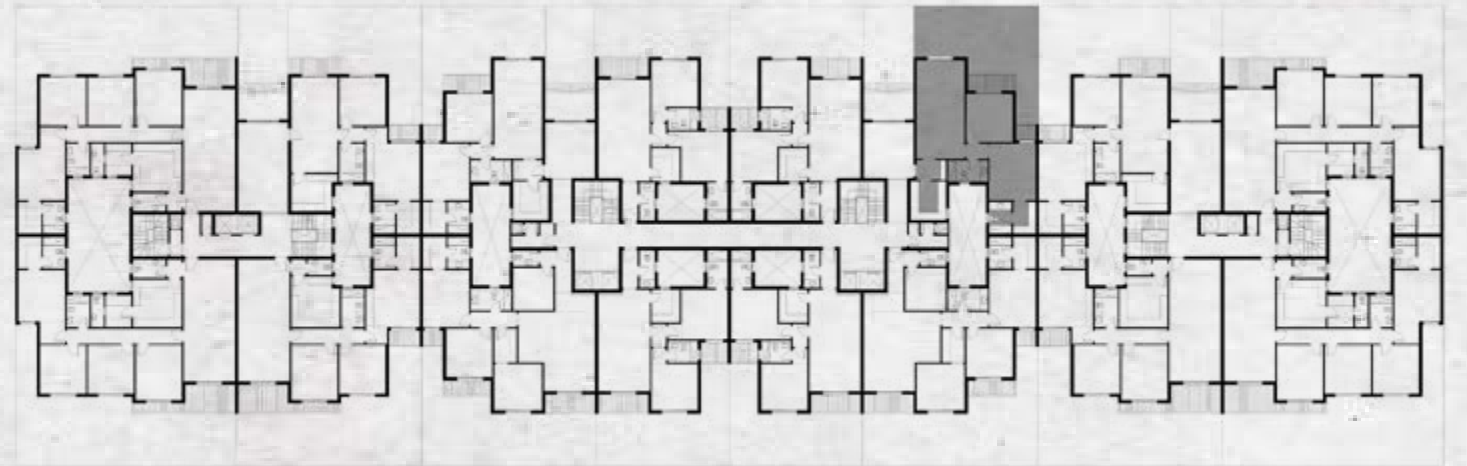


LOCATION & DIMENSIONS

Reception & Dining	7.43 X 5.97	Dressing	2.63 X 1.76	M.Bedroom	4.40 X 3.60
G. toilet	1.98 X 1.20	Bedroom 2	3.75 X 3.61	M.Dressing	2.46 X 1.78
Kitchen	3.32 X 3.16	Bathroom	3.15 X 1.70	M.Bathroom	2.46 X 1.70
Bedroom 1	3.73 X 3.60				

X78-GROUND (0-4)

TOTAL GROSS AREA - 112.00

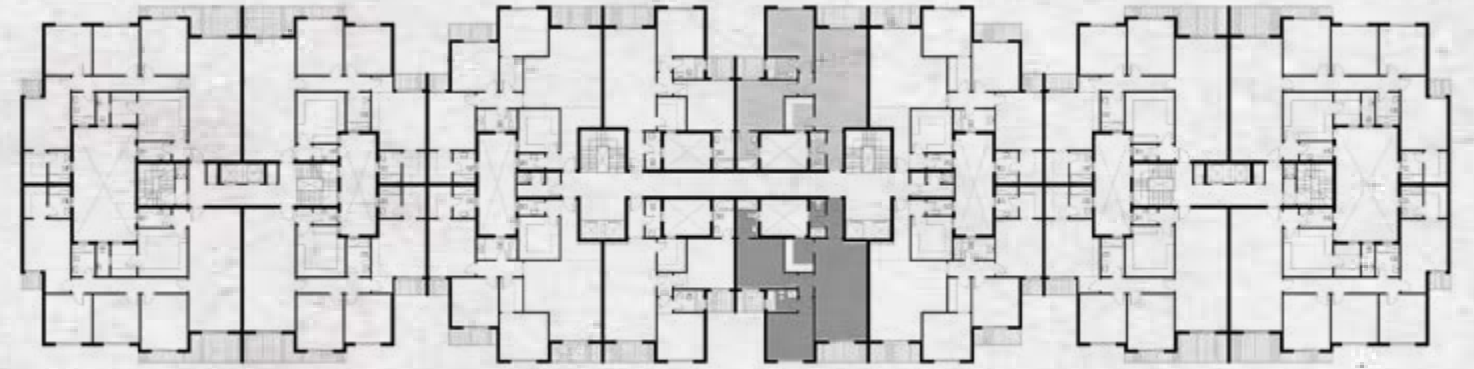
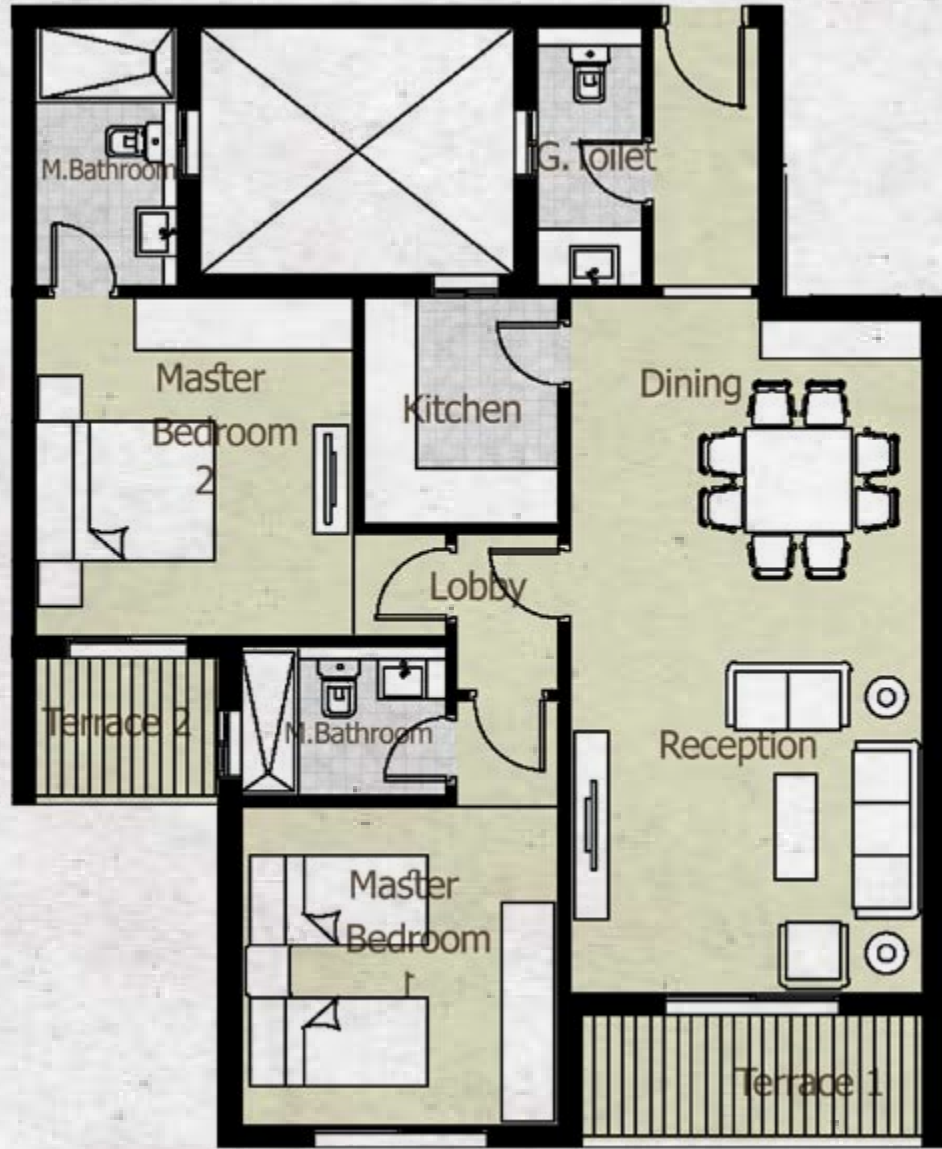


LOCATION & DIMENSIONS

Reception & Dining	7.63 X 3.60	Bathroom	2.99 X 1.96	M.Dressing	2.46 X 1.78
Kitchen	3.16 X 2.85	M.Bedroom	4.41 X 3.72	M.Bathroom	2.46 X 1.70
Bedroom 1	3.75 X 3.60				

**X78-TYPICAL
(1-1 / 1-2)**

TOTAL GROSS AREA - 122.00

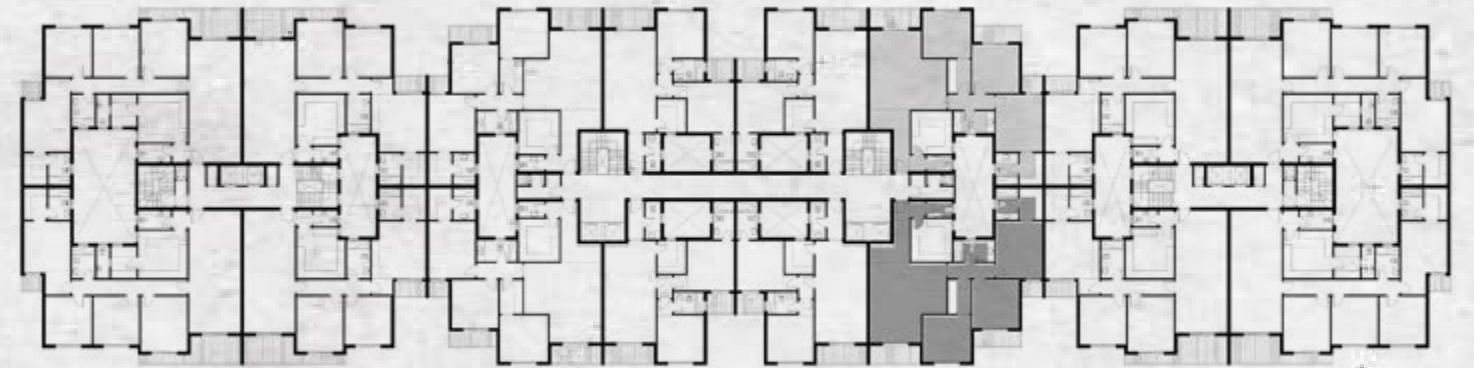
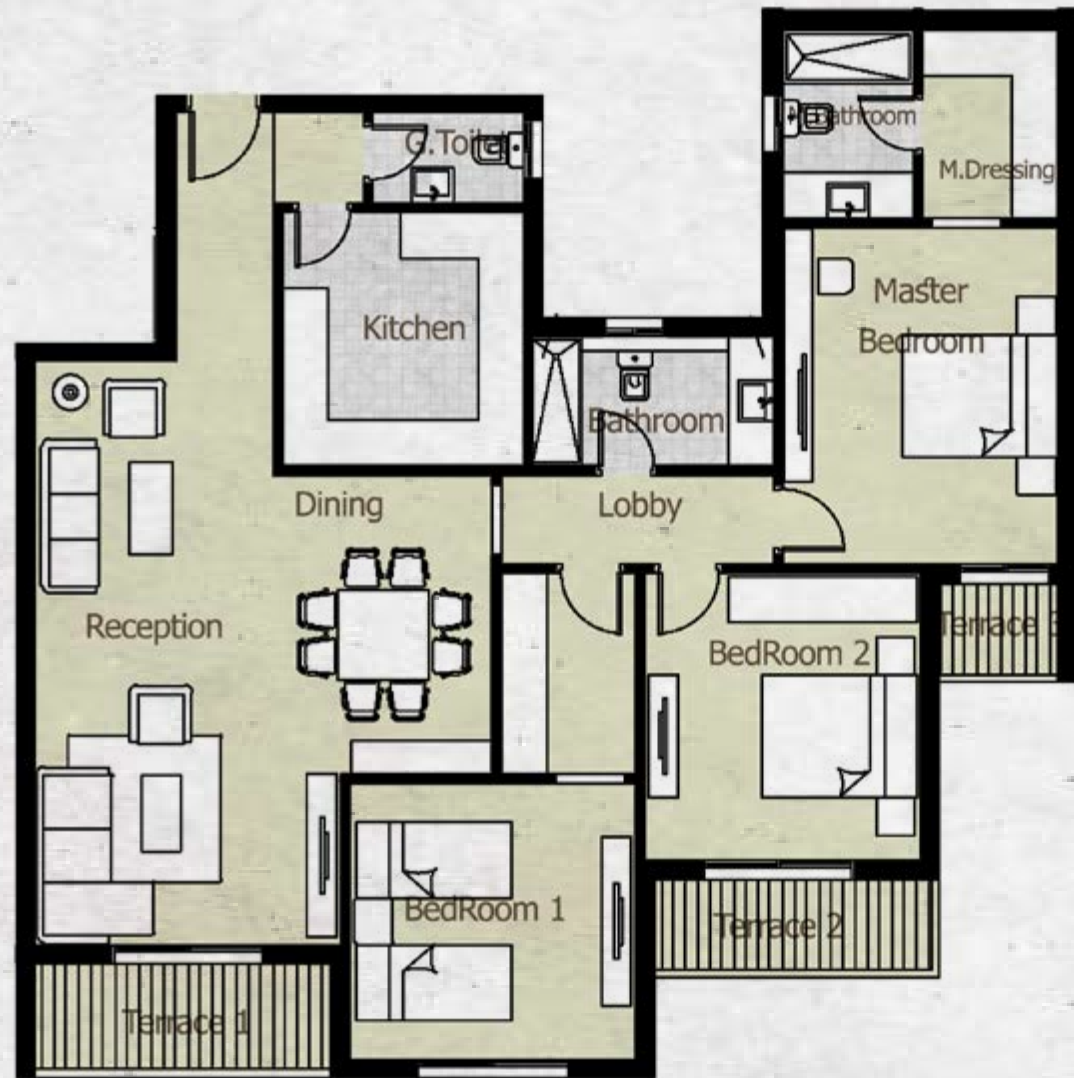


LOCATION & DIMENSIONS

Reception & Dining	7.43 X 4.00	M.Bedroom 1	3.60 X 3.60	M.Bedroom 2	3.83 X 3.60
G. toilet	2.93 X 1.20	M.Bathroom 1	2.32 X 1.72	M.Bathroom 2	2.93 X 1.60
Kitchen	2.55 X 2.22				

X78-TYPICAL (1-3 / 1-4)

TOTAL GROSS AREA - 171.00



LOCATION & DIMENSIONS

Reception & Dining	7.43 X 5.97	Dressing	2.63 X 1.76	M.Bedroom	4.40 X 3.60
G. toilet	1.98 X 1.20	Bedroom 2	3.75 X 3.61	M.Dressing	2.46 X 1.78
Kitchen	3.32 X 3.16	Bathroom	3.15 X 1.70	M.Bathroom	2.46 X 1.70
Bedroom 1	3.73 X 3.60				

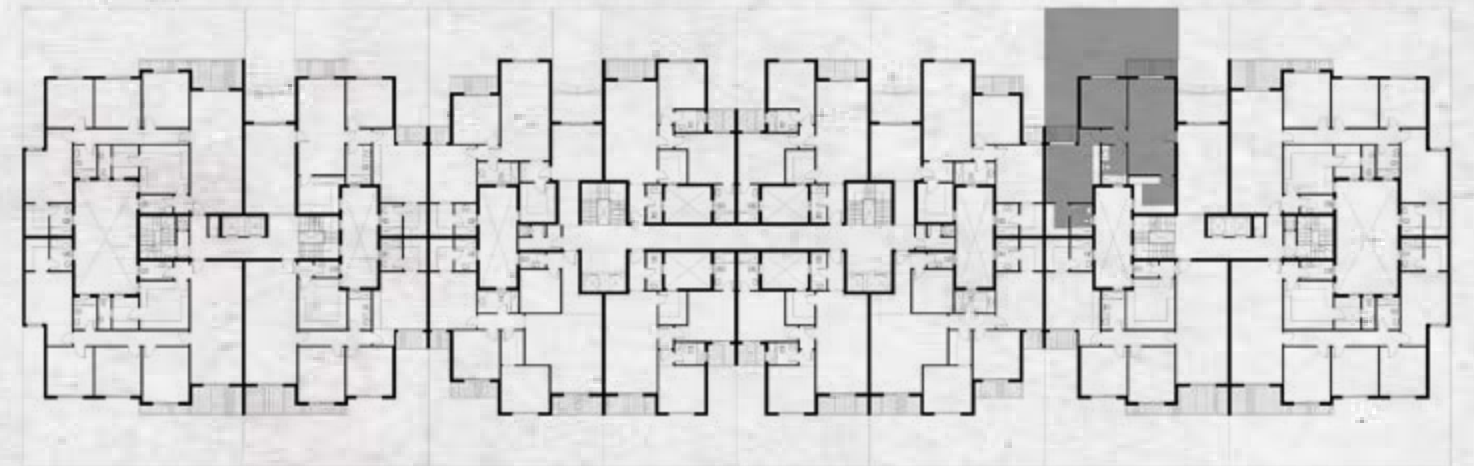
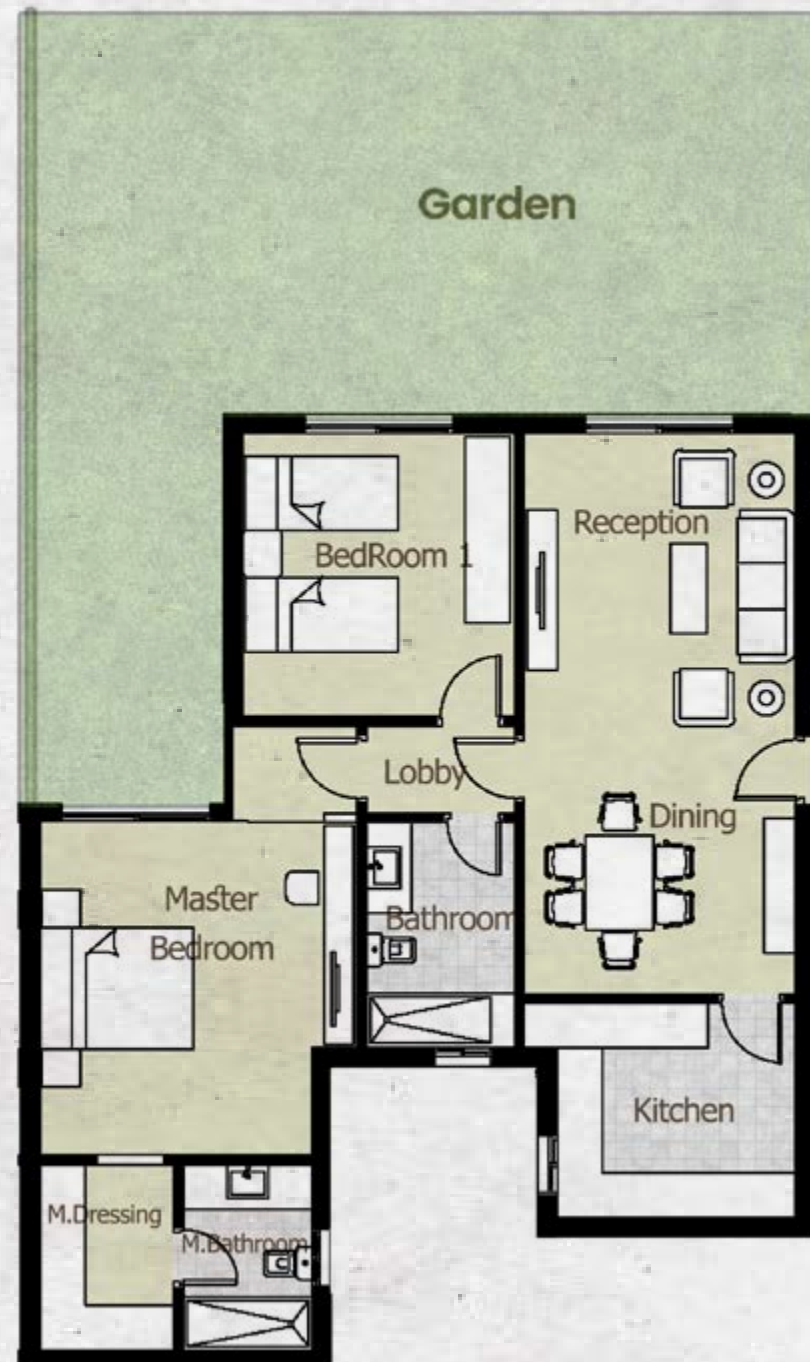
—
**APARTMENT
MODELS**

MODEL- Y79



Y79-GROUND (0-1)

TOTAL GROSS AREA - 112.00

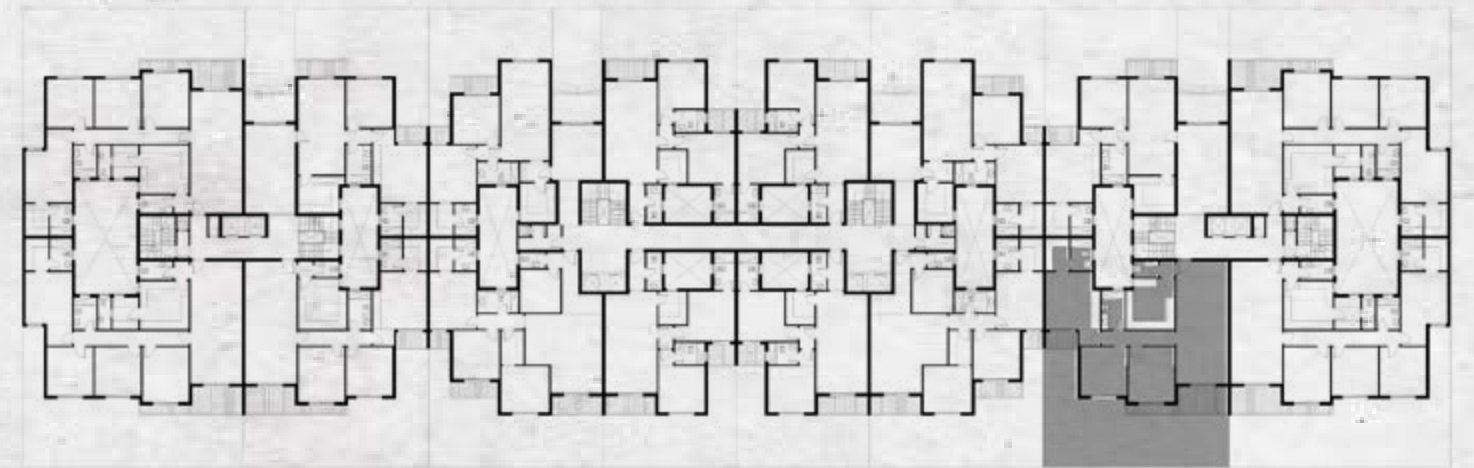


LOCATION & DIMENSIONS

Reception & Dining	7.42 X 3.60	Bathroom	2.99 X 1.96	M.Dressing	2.46 X 1.78
Kitchen	3.16 X 2.85	M.Bedroom	4.41 X 3.72	M.Bathroom	2.46 X 1.70
Bedroom(1)	3.75 X 3.60				

Y79-GROUND (0-2)

TOTAL GROSS AREA - 160.00

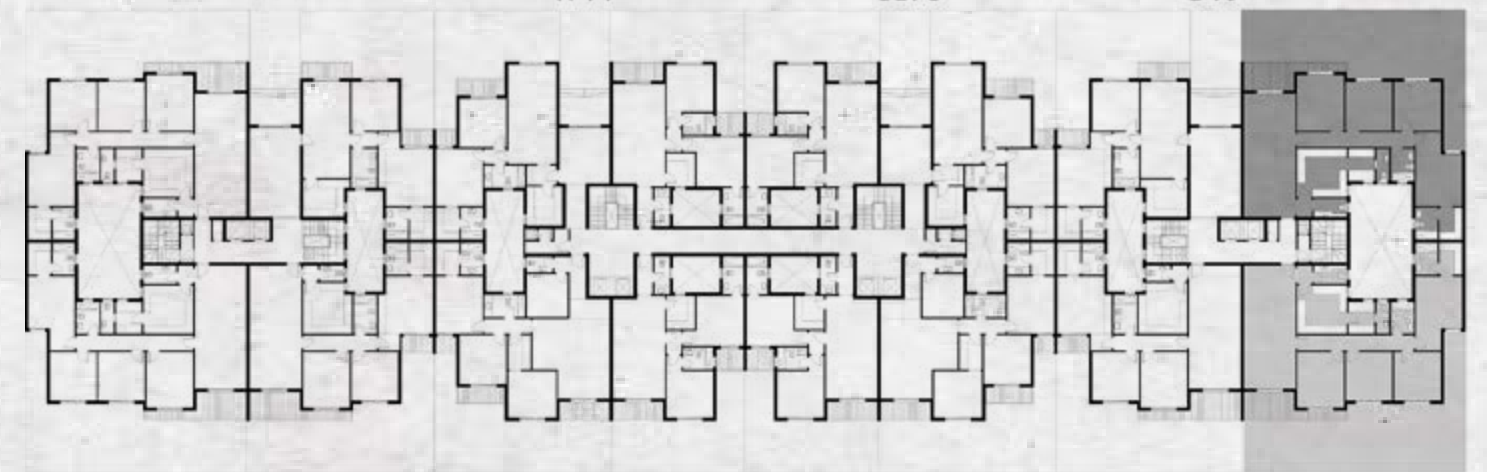


LOCATION & DIMENSIONS

Reception & Dining	9.45 X 4.00	Bedroom 1	4.26 X 3.60	M.Bedroom	4.41 X 3.72
G. Toilet	1.88 X 1.20	Bedroom 2	3.75 X 3.60	M.Dressing	2.46 X 1.78
Kitchen	3.92 X 3.76	Bathroom	2.99 X 1.80	M.Bathroom	2.46 X 1.70

Y79-GROUND (0-3 / 0-4)

TOTAL GROSS AREA - 191.00

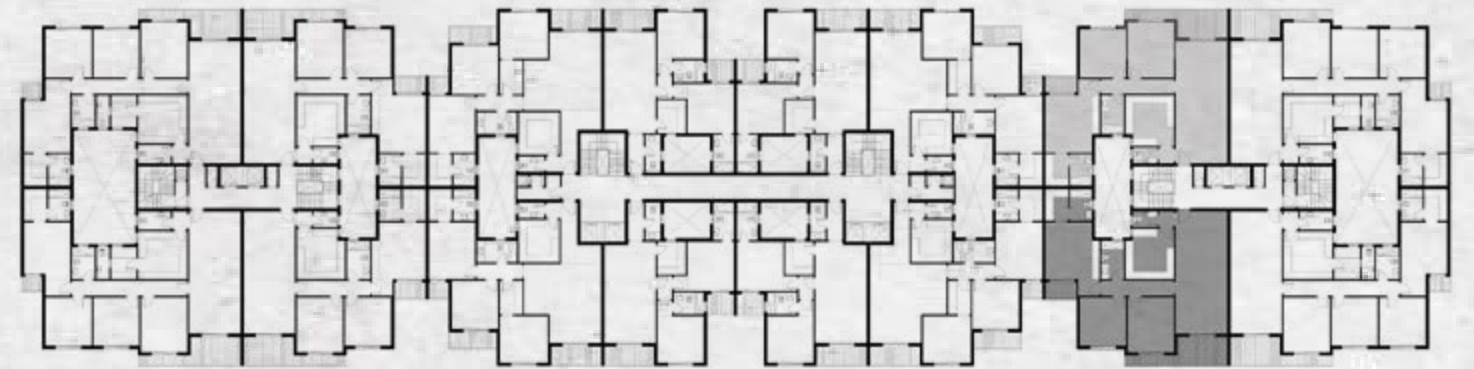
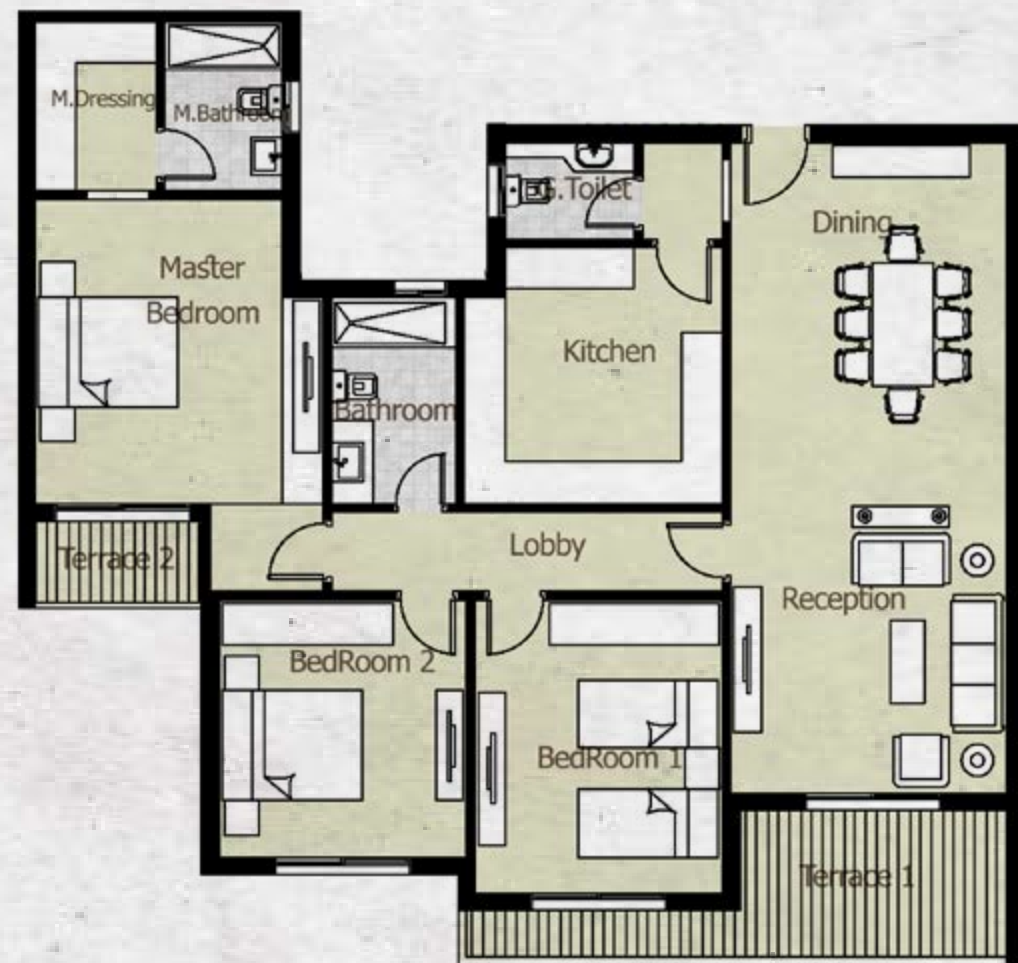


LOCATION & DIMENSIONS

Reception & Dining	9.45 X 4.00	Maid Toilet	2.47 X 1.00	Bathroom	2.47 X 1.80
G.Toilet	2.54 X 1.41	BedRoom 1	4.26 X 3.60	M.Bedroom	5.68 X 3.60
Kitchen	3.82 X 3.71	BedRoom 2	3.75 X 3.60	M.Dressing	2.46 X 1.78
Maid Room	3.13 X 2.47	BedRoom 3	3.75 X 3.60	M.Bathroom	2.46 X 1.70

Y79-TYPICAL (1-1 / 1-2)

TOTAL GROSS AREA - 179.00



LOCATION & DIMENSIONS

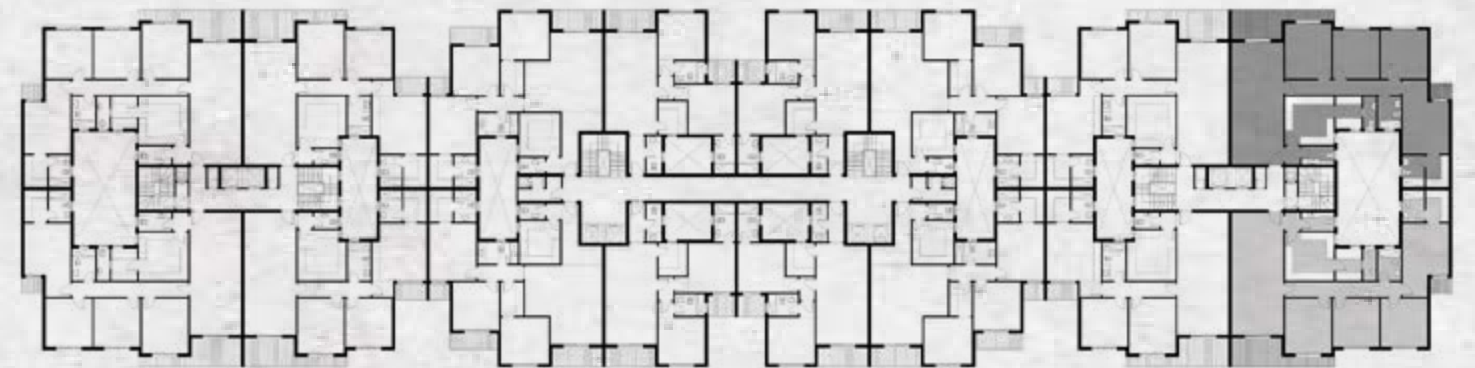
Reception & Dining 9.45 X 4.00
 G.Toilet 1.88 X 1.20
 Kitchen 3.92 X 3.76

BedRoom 1 4.26 X 3.60
 bedroom 2 3.75 X 3.60
 Bathroom 2.99 X 1.80

M.Bedroom 4.41 X 3.72
 M.Dressing 2.46 X 1.78
 M.Bathroom 2.46 X 1.70

**Y79-TYPICAL
(1-3 / 1-4)**

TOTAL GROSS AREA - 209.00



LOCATION & DIMENSIONS

Reception & Dining	9.45 X 4.00	Maid Toilet	2.47 X 1.00	Bathroom	2.47 X 1.80
G.Toilet	2.54 X 1.41	BedRoom 1	4.26 X 3.60	M.Bedroom	5.68 X 3.60
Kitchen	3.82 X 3.71	BedRoom 2	3.75 X 3.60	M.Dressing	2.46 X 1.78
Maid Room	3.13 X 2.47	BedRoom 3	3.75 X 3.60	M.Bathroom	2.46 X 1.70



KEEP IN TOUCH

19907



azad | tāmeer
views

Block no 15, South Investors
Area Ext, El Andalos, New Cairo, Cairo Egypt

4 Tawfik Diab St, Qasr El Nil,
Cairo Governorate 11519

19907
www.tameer.com.eg